

# REALITY TWIN™ GAUSSIAN VISUALS

Visualise any existing facility in  
the virtual world with  
photorealistic precision.

[www.solidcomp.com](http://www.solidcomp.com)



GAUSSIAN VISUALS

MESH MODEL

## COMMUNICATE PRECISELY WITH REALITY TWIN™ **GAUSSIAN VISUALS**

### **FROM POINT CLOUDS TO PRECISION REALISM WITHIN YOUR REALITY TWIN ENVIRONMENT**

Gaussian Visuals is a cutting-edge 3D rendering technique to create ultra-realistic large-scale 3D models, ideal for communication and collaboration.

***SolidComp***



# REALISTIC VISUALS WITH EASY SETUP, USE AND UPDATING

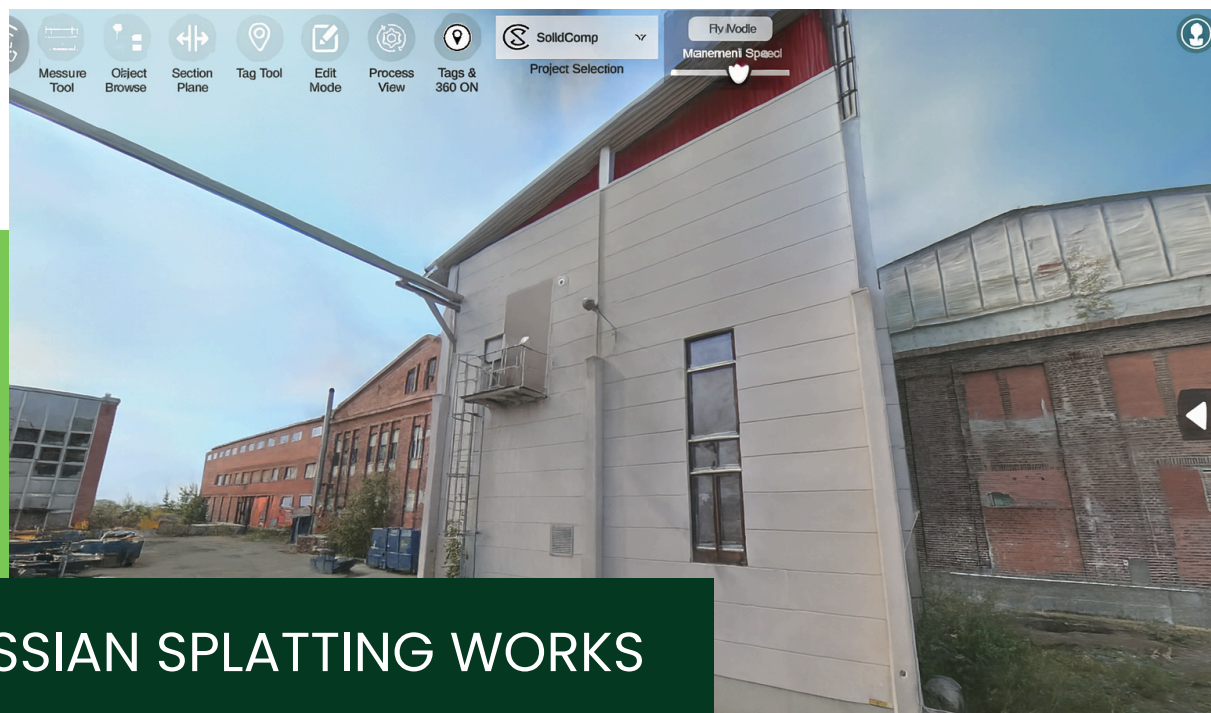
## VISUAL PRECISION

Gaussian 'splats' use ellipsoid kernels to represent each point in space, combining position, colour, orientation, and transparency. This results in accurate, smooth surfaces without heavy mesh geometry.



## ULTRA-FAST SCAN-TO-MODEL WORKFLOW

A full factory scan can be captured in days with handheld SLAM-based LiDAR scanners.



## HOW GAUSSIAN SPLATTING WORKS

Gaussian Splatting is a new method for representing and rendering 3D environments using collections of 3D Gaussians, spots of data in 3D space, with different orientations and densities to approximate the appearance of objects. These 'splats' form a cloud-like representation of a scene that can be rendered directly.

The Scanners for Gaussian Splatting are SLAM-based for rapid, on-the-go mobile mapping and enable data collection in GPS-denied environments, such as indoors and underground.

**SolidComp**

# CUTTING-EDGE FEATURES



## PHOTOREALISTIC

Millions of Gaussian “splats” deliver colour-accurate depth and shading with unmatched precision.



## FAST SETUP

From scan to fully functional model in record time, with minimal disruption.



## EXTREME DETAIL

2 cm accuracy with textures and fine structures up to 30% sharper than standard mapping.



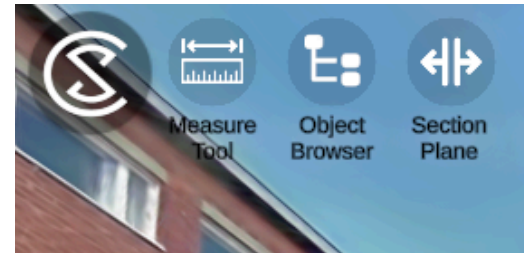
## MADE FOR INDUSTRY

Switch to Gaussian Visuals in Reality Twin with one click for immersive reviews and tours.



## FAST CAPTURE & UPDATE

Mobile LiDAR enables a full factory scan in days, with the possibility for weekly refreshes.



## FOR SMARTER AND EFFICIENT ASSET MANAGEMENT

### VISUAL ROI

- Explore your factory for up to 80% faster management decisions.
- A striking engagement tool for partners and investors.
- Immersive, highly communicable environment for teams and project managers.

### MAINTENANCE & SAFETY

- Site visits and safety training can be previewed with millimetre-level accuracy, reducing rework, downtime, and unnecessary visits.



**SolidComp**





START WITH BOOKING A DEMO

GAUSSIAN VISUALS



MESH MODEL

1

**Book your Reality Twin Gaussian Visuals demo.**

2

**Select your license package.** *Enterprise* includes everything; or upgrade to *Advanced* or *Pro* + add-ons.

Define your needs for up-to-date as-built documentation and choose between a mobile scanner for your own use or additional scanning as a service as needed.

3

**Initial scan:** We scan your facility efficiently with mobile scanner suitable for Gaussian visuals data format.

4

**Start using Gaussian Visuals.** Access it in Reality Twin on your regular laptop. We deliver training and scanner kit for updating your data (if included).

5

**For environment data updates,** scan your site using a handheld LiDAR scanner or use our service.

***SolidComp***

# SOLIDCOMP IS YOUR TRUSTED PARTNER

**SolidComp** is the Nordic leader in visual digital twins, laser scanning and lifecycle data solutions. We serve major industry clients including Yara, Kotkamills and Nurmeksen Lämpö, deploying Reality Twin across facilities ranging from mining to paper manufacturing.

**Reality Twin™** is a realistic virtual copy of your industrial facility that uniquely combines 3D design, operational metadata, and scanning into one live, secure visual system. With Reality Twin, you can make the most of your digital assets during their entire life cycle.

**Gaussian Visuals** is the next step: the world's first digital twin using Gaussian Splatting for truly photoreal visualisation in real-time.



## READY TO ELEVATE YOUR INDUSTRIAL FACILITY'S VIRTUAL COPY?

For a demo, send us a message or contact [info@solidcomp.fi](mailto:info@solidcomp.fi).



[www.solidcomp.com](http://www.solidcomp.com)